

**Navigating
Excellence**

**WHITE PAPER
SERIES**
PART TWO

IDWAL ID



NAVIGATING EXCELLENCE

PART TWO:

Meeting the Needs of
Commercial and Technical Directors

idwalmarine.com/id

Leveraging Idwal's technical expertise to advance your fleet management

Managing fleet condition efficiently is crucial for ensuring operational success and compliance. Commercial and technical directors face the challenge of maintaining vessel integrity, optimising performance, and minimising operational disruptions. Idwal offers a comprehensive solution through Idwal ID, its advanced inspection and grading processes. This whitepaper will demonstrate how our technical expertise, a cornerstone of the Idwal ID programme, supports informed decision-making and proactive fleet management.

Understanding your goals

At Idwal, we recognise the complex challenges faced by shipping industry leaders. Through extensive collaboration with our clients, we've identified key objectives that drive commercial and technical directors, including:

1

Standardised Vessel Condition Assessment

- Implement an objective, industry-recognised measure of asset integrity
- Enable consistent evaluation across fleets
- Benchmark against industry standards

2

Efficient Defect Management and Proactive Maintenance

- Utilise a centralised platform for defect tracking
- Conduct trend analysis to identify recurring issues
- Prioritise maintenance tasks effectively
- Shift from reactive to proactive maintenance approaches

3

Enhanced Compliance and Safety Performance

- Proactively identify and manage potential PSC and vetting issues
- Minimise the risk of detentions, incidents, and operational disruptions

4

Comprehensive Fleet Performance Visibility

- Leverage advanced analytics for performance insights
- Compare vessel and fleet performance against global standards
- Drive continuous improvement across the fleet

5

Improved Demonstration of Fleet Value and Condition

- Provide independent validation of vessel condition
- Support informed decision-making for charterers and financiers
- Substantiate OPEX decisions and maximise asset value

The Idwal technical process: a closer look

At Idwal, we pride ourselves on our rigorous, standardised approach to vessel inspections. Our process is designed to ensure consistency, thoroughness, and accuracy across all inspections, regardless of vessel type or location. Here's a detailed look at our technical process:



Pre-inspection preparation

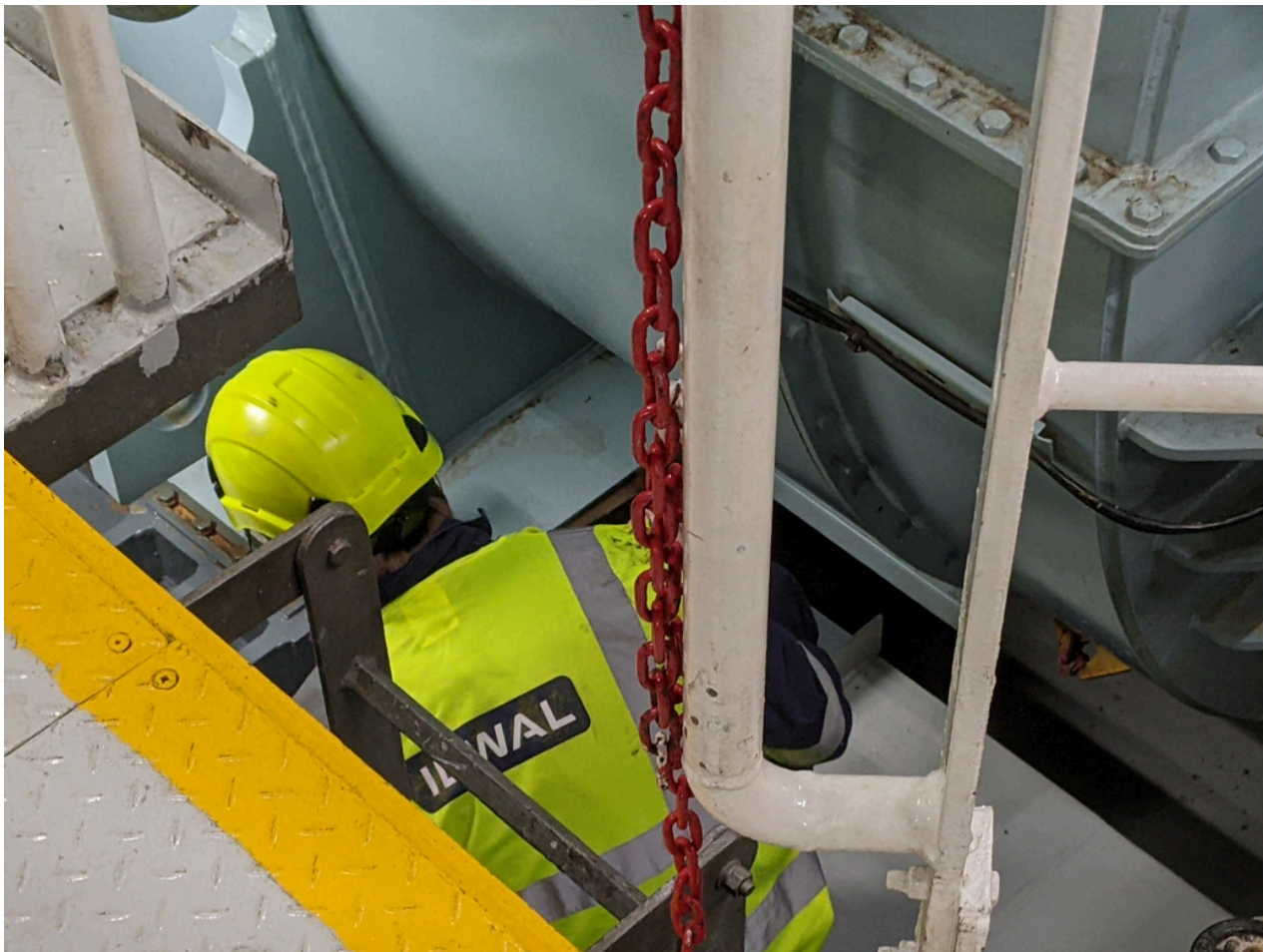
- **Client Communication:** Our Operations team facilitates clear communication with clients before, during, and after inspections via email and telephone.
- **Document Collection:** We conduct an extensive document review prior to the physical inspection. This critical step helps identify potential issues and shapes the focus of the on-site inspection.
- **Vessel Communication:** Our surveyor communicates directly with the vessel's Master to arrange attendance and outline inspection requirements.

On-site inspection

- **Standardised Approach:** We utilise a standardised inspection process across all vessel types, ensuring consistency and impartiality.
- **Comprehensive Coverage:** Our inspections typically include over 300 high-quality photos and attempts to access all areas, including ballast tanks and cargo holds, subject to safety and operational constraints.
- **Smart Technology:** Surveyors use Idwal's smart PDF and inspection portal to increase accuracy and efficiency during the inspection process.

Report preparation

- **Quick Turnaround:** Our standard report delivery is 5 working days from the day of the vessel inspection.
- **Thorough Analysis:** The Idwal inspection report includes advanced approaches such as:
 - **Speed and Consumption Analysis:** Utilising recent data from noon reports and logs, comparing vessel-reported figures with sister ships and industry standards.
 - **Design & Construction Scoring:** A points-based system evaluating installed equipment and machinery, considering advanced navigation equipment, energy-saving devices, and enhanced machinery.
 - **Dry Dock Cost Estimation:** Based on industry averages for similar vessels, considering vessel age, type, and size.





Quality assurance

- **Multi-stage Review:** Every report passes through Idwal's internal quality control process, following a standardised review to ensure technical accuracy and detail.
- **Technical Team Review:** Our internal technical team conducts a thorough review, with the ability to make minor adjustments to the report to ensure accuracy and rationality.
- **Continuous Improvement:** We have a dedicated workflow working group that meets monthly to review and improve our inspection process, considering regulatory changes, client suggestions, and reported incidents.

Client-centric approach

- **Flexible Inspection Scopes:** We tailor our inspections to client requirements and vessel types, accommodating specific areas of concern or focus points.
- **Transparent Communication:** We provide clear explanations for gradings and notable items, maintaining open dialogue on cost estimations and their variables.
- **Feedback Management:** We have a robust client query process in place, managed by our Technical team, to address any concerns or requests for additional information.

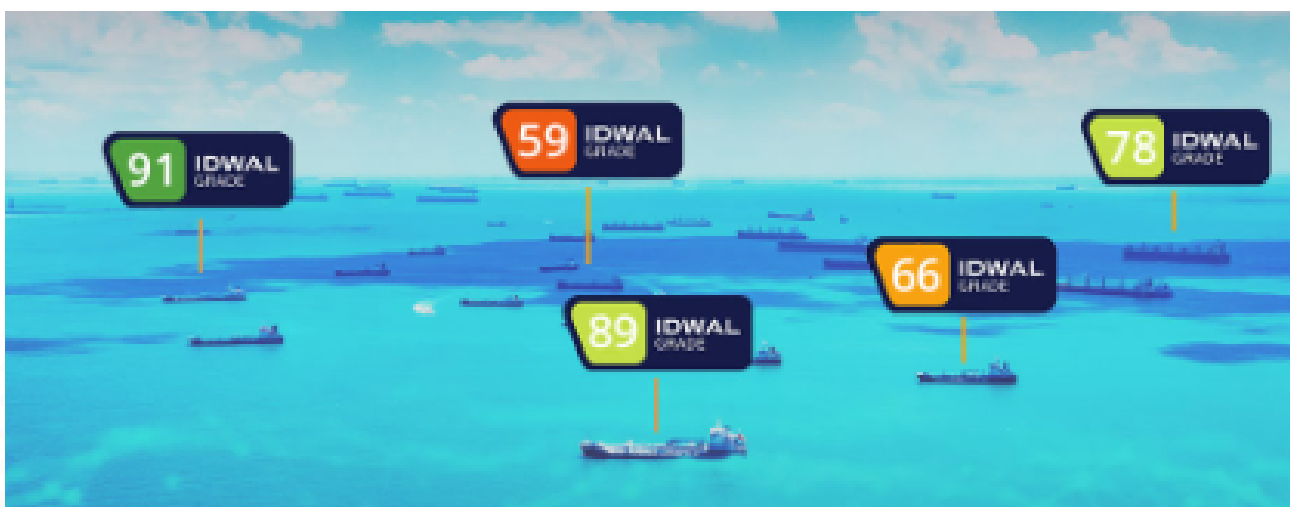
Continuous improvement

- **Regular Updates:** We consistently update our grading systems and inspection processes to reflect industry advancements and regulatory changes.
- **Regulatory Vigilance:** A dedicated resource within our Technical team focuses on staying updated with changes in regulatory requirements, ensuring our inspections remain relevant and compliant.
- **Incorporation of Feedback:** Client feedback and industry trends are regularly considered in our workflow working group to drive continuous improvement.

Confidentiality and integrity

- **Unbiased Reporting:** Our reports reflect the vessel's condition at the time of inspection, with transparent handling of post-inspection improvements or repairs.
- **Client Confidentiality:** We maintain strict adherence to client confidentiality in all report discussions and data handling.

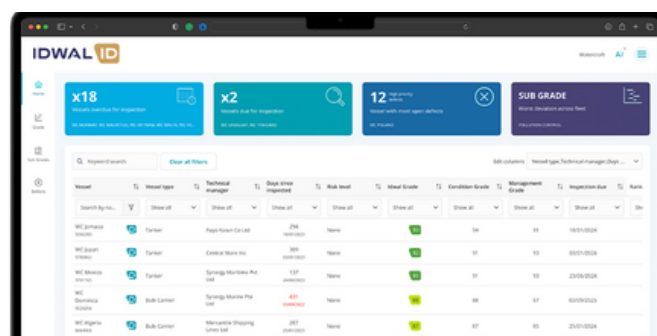
By leveraging this comprehensive process, Idwal ensures that every inspection provides accurate, valuable insights to our clients. Our commitment to technical excellence, combined with our understanding of client needs, positions us as a trusted partner in maritime asset management.



The power of Idwal ID

While our technical expertise provides the foundation of our approach to assessing and improving vessel condition, Idwal ID takes it to the next level, providing:

- Aggregated defect management across your fleet
- Trend analysis to identify systemic issues
- Benchmarking capabilities to compare your performance against global standards
- A centralised platform for all your inspection data and documents



The Idwal Advantage: meeting your needs with expertise

Rigorous Inspections and Expert Surveyors

Our industry-leading inspection process forms the foundation of Idwal ID. Using an industry-best checklist, our impartial surveyors conduct thorough examinations of vessels, capturing over 500 data points on every aspect of the ship's condition. With the world's largest network of surveyors, we ensure consistent, high-quality inspections across all vessel types and in more than 100 countries.

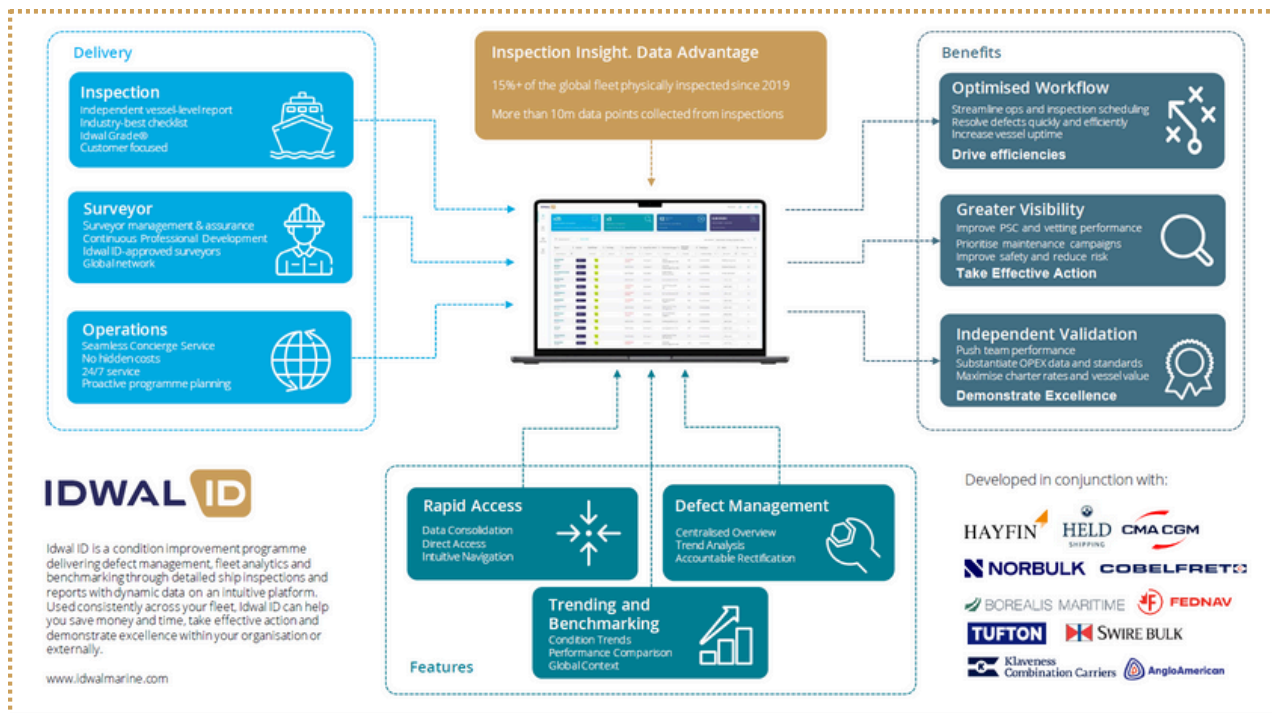
Advanced Analytics Platform

The Idwal ID platform brings inspection data to life, offering powerful analytics and benchmarking capabilities. This intuitive interface allows users to:

- Interrogate data for deeper insights
- Identify trends across the fleet
- Compare performance against industry benchmarks
- Prioritise areas for improvement

Independent validation and industry impact

Idwal ID is a pivotal asset for commercial and technical directors, and for financial stakeholders. It offers robust validation and benchmarking, essential for asset evaluation and decision-making. The platform's flexibility caters to various user needs, from high-level overviews to detailed defect analyses.



Idwal ID offers a comprehensive solution for commercial and technical directors seeking to optimise their fleet condition management. By combining rigorous inspections, advanced analytics, and a deep understanding of industry needs, we provide the tools and insights necessary to drive excellence across your fleet.

Ready to unlock the power of data-driven fleet management?

Contact us today for a full demo and to discuss how we can create a customised condition improvement program for your fleet.

enquiries@idwalmarine.com



**CONTACT US FOR
FURTHER ENQUIRIES**

enquiries@idwalmarine.com

idwalmarine.com/id